



PERSPEKTIVEN FÜR
UMWELT & GESELLSCHAFT **umwelt**bundesamt^u

Registry.at

Chris Schubert

Director of CCCA – Data Centre

Tel: +43136026 2519

E-Mail: chris.schubert@ccca.ac.at

Christine Brendle

Environmental information management

Tel: +43131304 3693

E-Mail: christine.brendle@umweltbundesamt.at

Wien, Dezember 2016

Agenda

- Implementierung der Registry.AT
 - Codelisten und Register
- Federation Register RoR
- Merkmale des INSPIRE Vokabulars
 - Erweiterbarkeit der Code listen
 - Use Cases
- Aktionen 2017

Registry.AT Implementierung



AUSTRIAN INSPIRE
Registry

Über diese Webseite | Kontakt | Rechtlicher Hinweis

Deutsch (de)

Austrian INSPIRE Registry > Codelisten Register

Codelisten Register

Suche...

ID: <http://registry.inspire.gv.at/codelist>

Name: **Codelisten Register**

Inhaltliche Zusammenfassung: Das österreichische Codelisten-Register enthält die in den Durchführungsbestimmungen hinsichtlich der Interoperabilität von Geodatenätzen und -diensten (Verordnung (EU) Nr. 1089/2010) enthaltenen Codelisten und deren Werte.

Besitzer: **Climate Change Centre Austria**

Register-Manager: **CCCA Data Centre**

Kontrollgremium: **CCCA Data Centre**

Submitter: **INSPIRE NKS**

Kontaktpunkt: **CCCA Data Centre**

Lizenz: **Europa Legal Notice**

Andere Formate:



Code Lists

Filter Name	Filter Themen	Filter Anwendungsschema	Filter Status
Name	Themen	Anwendungsschema	Status
LISA Bodenbedeckungsklasse	http://inspire.ec.europa.eu/theme/lc	http://inspire.ec.europa.eu/applicationschema/lcn	Gültig

Elemente pro Seite 50 1 bis 1 von 1 Einträgen werden angezeigt

Erster Zurück 1 Vor Letzter

Codelisten Wert

Filter Name	Filter Übergeordneter Wert	Filter Regelungsebene
Name	Übergeordneter Wert	Regelungsebene
befestigte Fläche	nicht vegetationsbedeckt	national-technical
bestockte Fläche	verholzt	national-technical
Eis	Schnee und Eis	national-technical
Fels	nicht befestigte Fläche	national-technical
Gebäude	befestigte Fläche	national-technical
Gebüsch	verholzt	national-technical
Grünbewuchs	nicht verholzt	national-technical
Grünbewuchs dauerhaft	Grünbewuchs	national-technical
Grünbewuchs periodisch	Grünbewuchs	national-technical
Laubbäume	bestockte Fläche	national-technical
Mischung Laub/Nadel	bestockte Fläche	national-technical
Nadelbäume	bestockte Fläche	national-technical
nicht befestigte Fläche	nicht vegetationsbedeckt	national-technical
nicht vegetationsbedeckt		national-technical
nicht verholzt	vegetationsbedeckt	national-technical
offener Boden (dauerhaft)	nicht befestigte Fläche	national-technical
Schilf	nicht verholzt	national-technical
Schnee	Schnee und Eis	national-technical
Schnee und Eis	Wasser	national-technical
Schotter	nicht befestigte Fläche	national-technical
sonstige befestigte Fläche	befestigte Fläche	national-technical
vegetationsbedeckt		national-technical
verholzt	vegetationsbedeckt	national-technical
Wasser	nicht vegetationsbedeckt	national-technical
Wasseroberfläche	Wasser	national-technical
Zwergstrauch	verholzt	national-technical

Elemente pro Seite 50 1 bis 26 von 26 Einträgen werden angezeigt

Erster Zurück 1 Vor Letzter

INSPIRE-Register

Powered by: Re3gistry 1.2

<http://registry.inspire.gv.at/codelist>

Registry.AT Implementierung

LISA Land Cover Class

INSPIRE Registry

Austrian INSPIRE Registry > Austrian code list register > LISA Land Cover Class

LISA Land Cover Class

ID: <http://registry.inspire.gv.at/codelist/LISALandCoverClassValue>
 This version: <http://registry.inspire.gv.at/codelist/LISALandCoverClassValue>
 Latest version: <http://registry.inspire.gv.at/codelist/LISALandCoverClassValue>

Label: **LISA Land Cover Class**
 Definition: LISA Land cover code list

Governance level: national-technical
 Status: Valid

Themes: <http://inspire.ec.europa.eu/theme/ps>
 Application schema: <http://inspire.ec.europa.eu/applicationschema/ps>
 Extensibility: Extensible with values at any level

Other formats:

Code list values

Filter Label	Filter Parent
Label	Parent
abiotic	
bare rock	non built-up
biotic	
building	built-up
built-up	abiotic
bushes	woody
coniferous trees	trees
deciduous trees	trees
dwarf shrubs	woody
herbaceous	biotic
herbaceous	herbaceous
herbaceous periodically	herbaceous

LISA Bodenbedeckung
Code Liste

Nature protection categories

INSPIRE Registry

Austrian INSPIRE Registry > Austrian code list register > Nature protection categories

Nature protection categories

ID: <http://registry.inspire.gv.at/codelist/AustrianNatureProtectionSchema>
 This version: <http://registry.inspire.gv.at/codelist/AustrianNatureProtectionSchema>
 Latest version: <http://registry.inspire.gv.at/codelist/AustrianNatureProtectionSchema>

Label: **Nature protection categories**
 Definition: Overview of Austrian nature protection designation categories.

Governance level: national-technical
 Status: Valid

Themes: <http://inspire.ec.europa.eu/theme/ps>
 Application schema: <http://inspire.ec.europa.eu/applicationschema/ps>
 Extensibility: Extensible with values at any level

Other formats:

Code list values

Filter Label	Filter Parent	Filter
Label	Parent	Gov
Biosphere Park		natio
Biosphere Park zone	Biosphere Park	natio
Ecological Development Area	other protection areas	natio
Ecological priority area	European protection area (Natura 2000)	natio
European game protection area (Natura 2000)	European protection area (Natura 2000)	natio
European protection area (Natura 2000)		natio
Flora Protection Area	other protection areas	natio
Landscape and nature protection area	Nature Reserve	natio
Landscape protection area		natio
Landscape protection area: zone	Landscape protection area	natio
National Park		natio

Schutzgebietskategorien
Code Liste

Geodatenstellen Register

INSPIRE Registry

Austrian INSPIRE Registry > Geodatenstellen Register

Geodatenstellen Register

ID: <http://registry.inspire.gv.at/dataprovider>

Name: **Geodatenstellen Register**
 Inhaltliche Zusammenfassung: Das österreichische Geodatenstellen Register enthält die österreichischen Datenprovider.,

Besitzer: **Climate Change Centre Austria**
 Register-Manager: **CCCA Data Centre**
 Kontrollgremium: **INSPIRE NKS**
 Submitter: **Umweltbundesamt**
 Kontaktpunkt: CCCA Registry Team
 Lizenz: Europa Legal Notice

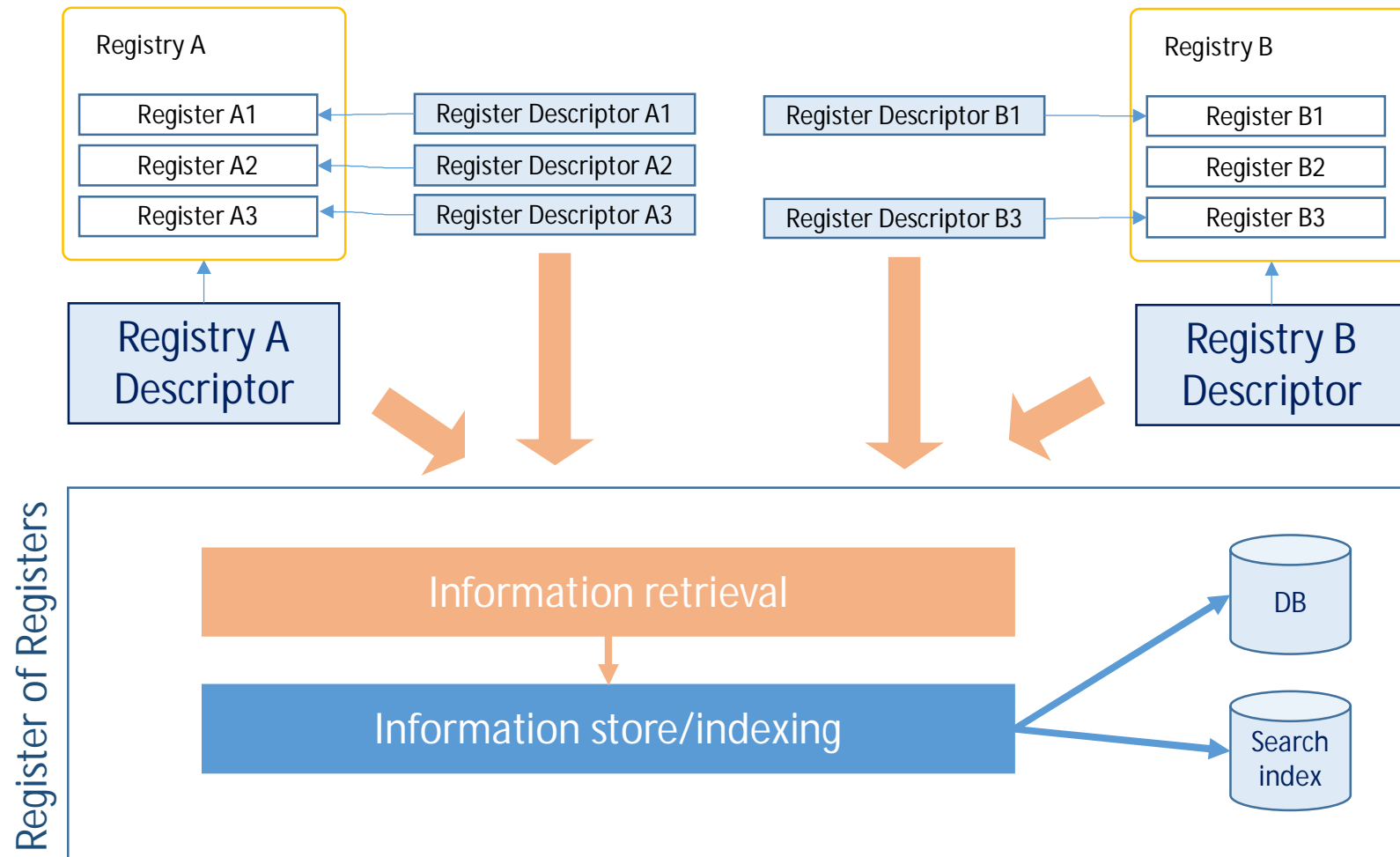
Andere Formate:

Geodatenstellen

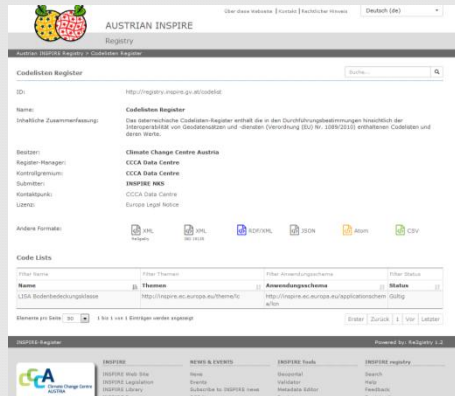
Filter Definition der original Quelle	Filter Name
Definition der original Quelle	Name
AGES - Agentur für Ernährungssicherheit, Spargelfeldstr. 191, 1226 Wien, michael.schwarz@ages.at	0001
ALT_BMWF - Bundesministerium für Wissenschaft und Forschung_ALT, 1014 Wien, service@bmfwf.gv.at	0042
ALT_Wien - Amt der Wiener Landesregierung, wolfgang.joerg@wien.gv.at und post@ma41.wien.gv.at	0026
AMA - Agrarmarkt Austria, Dresdner Straße 70, 1200 Wien, Tibor.Gunis@ama.gv.at und INSPIRE@ama.gv.at	0095
APG - Austrian Power Grid AG, Wagramer Straße 19, 1220 Wien, inspire@apg.at	0115
ASFINAG - ASFINAG, Rotenturmstr. 6-9, 1011 Wien, peter.aubrecht@asfinag.at;	0011
ASFINAG Nord - ASFINAG Nord, Traunfelderstr. 9, 4052 Ansfelden, peter.aubrecht@asfinag.at;	0037
ASFINAG Süd - ASFINAG Süd, Fuchsenfeldweg 71, 8074 Graz-Raaba, peter.aubrecht@asfinag.at;	0004
Austro Control - Austro Control, Towerstrasse 120, 1330 Wien, david.malkic@austrocontrol.at	0012
AWI - Bundesanstalt für Agrarwirtschaft, Marxergasse 2, 1030 Wien, Klaus.WAGNER@awi.bmfuw.gv.at	0090
BAIK - Bundeskammer der Architekten und Ingenieurkonsulenten, Kariagasse 9/2, 1040 Wien, office@arching.at	0063
BEV - Bundesamt für Eich- und Vermessungswesen, Schiffamtgasse 1-3, 1020 Wien, reinhard.gissing@bev.gv.at;	0002
BEZIRKE - Bezirksverwaltungsbehörden	0084
BFV - Bundesforschungs- und Ausbildungszentrum für Wald, Naturgefahren und Landschaft, Seckendorff-Gudent-Weg 8, 1131 Wien, michael.	0006

Geodatenstellen
Register

Federation Register / RoR Register of Registers



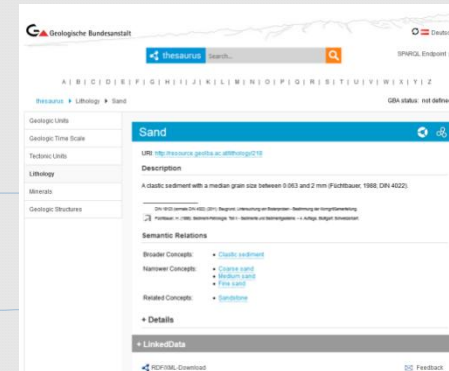
Federation Register / RoR Register of Registers



Use Case II

- Register Descriptor A1
- Register Descriptor A2
- Register Descriptor A3

- Register Descriptor B1
- Register Descriptor B3



Use Case I

registry.inspire.gv.at/LISA
reliesOn
inspire.ec.europa.eu/codelist/
LandCoverClassValue"

resource.geolba.ac.at/lithology
reliesOn
inspire.ec.europa.eu/codelist/
LithologyValue

Register of Registers

Filter Label	Filter Publisher	Filter URI
Label	Publisher	URI
INSPIRE registry	European Commission, Joint Research Centre	http://inspire.ec.europa.eu/registry
Spanish Registry - Test version	Instituto Geográfico Nacional	http://www.idee.es/register-inspire
EEA Data Dictionary vocabularies	European Environment Agency	http://dd.eionet.europa.eu/vocabularies
Austrian INSPIRE registry	CCCA Data Centre	http://registry.inspire.gv.at
Lithological Classification Austria - Test	Geological Survey of Austria	http://resource.geolba.ac.at/lithology/0

This is a testbed instance of the INSPIRE Register Federation. Please remind that the contents may not be complete and/or accurate.



INSPIRE

Register Federation

[About](#) | [Contact](#) | [Legal notice](#)

English (en)

[European Commission](#) > [INSPIRE](#) > [Register Federation](#) > [Registries](#)

[Registries](#) [Registers](#) [Relations](#) [Federated search](#) [Help](#)

[Private area](#) [Logout](#)

Registries

Filter Label	Filter Publisher	Filter URI
Label	Publisher	URI
INSPIRE registry	European Commission, Joint Research Centre	http://inspire.ec.europa.eu/registry
Spanish Registry - Test version	Instituto Geográfico Nacional	http://www.idee.es/register-inspire
EEA Data Dictionary vocabularies	European Environment Agency	http://dd.eionet.europa.eu/vocabularies
Austrian INSPIRE registry	CCCA Data Centre	http://registry.inspire.gv.at
Lithological Classification Austria - Test	Geological Survey of Austria	http://resource.geolba.ac.at/lithology/0

Items per page Showing 1 to 5 of 5 entries

[First](#) [Previous](#) [1](#) [Next](#) [Last](#)

REST URL: <http://inspire-regadmin.jrc.ec.europa.eu/ror/rest/registries>

[Web Service details](#)

<http://inspire-regadmin.jrc.ec.europa.eu/ror/>

INSPIRE Register Federation

v. 0.0.alpha-7



INSPIRE

[INSPIRE Web Site](#)
[INSPIRE Legislation](#)
[INSPIRE Library](#)
[INSPIRE Forum](#)
[INSPIRE Thematic clusters](#)

NEWS & EVENTS

[News](#)
[Events](#)
[Subscribe to INSPIRE news](#)
[RSS News](#)

INSPIRE Tools

[Geoportal](#)
[Validator](#)
[Metadata Editor](#)
[Registry](#)
[Data Classification tool](#)

Register Federation

[Registries](#)
[Registers](#)
[Relations](#)
[Federated search](#)

Merkmale der INSPIRE Code lists

EventEnvironmentValue

Definition: Terms for the geologic environments within which geologic events take place.
 Extensibility: open
 Identifier: <http://inspire.ec.europa.eu/codeList/EventEnvironmentTerm>
 Values: The allowed values for this code list comprise the values specified in the table below and additional values at any level defined by data providers.

earthInteriorSetting	Name: earth interior setting Definition: Geologic environments within the solid Earth.
earthSurfaceSetting	Name: earth surface setting Definition: Geologic environments on the surface of the solid Earth.
extraTerrestrialSetting	Name: extra-terrestrial setting Definition: Material originated outside of the Earth or its atmosphere.
tectonicallyDefinedSetting	Name: tectonically defined setting Definition: Setting defined by relationships to tectonic plates on or in the Earth.
The table below includes additional recommended values that may also be used by data providers. Before creating new terms, please check if one of them can be used.	
abandonedRiverChannelSetting	Name: abandoned river channel setting Definition: A drainage channel along which runoff no longer occurs, as on an alluvial fan Parent: riverplainsystemsetting
aboveCarbonateCompensationDepthSetting	Name: above carbonate compensation depth setting Definition: Marine environment in which carbonate sediment does not dissolve before reaching the sea floor and can accumulate.
...	
wetlandSetting	Name: wetland setting Definition: Setting characterized by gentle surface slope, and at least intermittent presence of standing water, which may be fresh, brackish, or saline. Wetland may be terrestrial setting or shoreline setting. Parent: earthsurfacesetting

- Code list besitzen ein tag "Regelungsebene"

<http://inspire.ec.europa.eu/registry/governance-level/>

Allowed values in ISDSS
(4 top category values)
eu-legal

Additional recommended values in TG
{162 additional values (subtypes)}
eu-technical

INSPIRE Code lists

4 Erweiterungsklassen von INSPIRE code lists

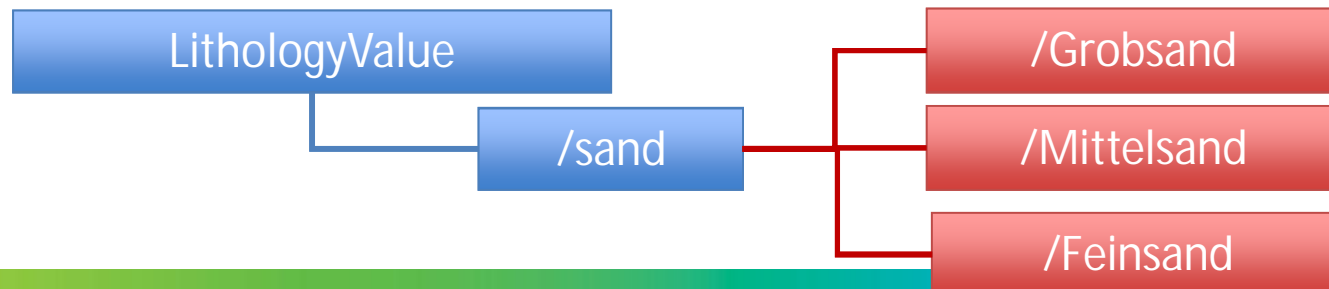
<http://inspire.ec.europa.eu/registry/extensibility/>

a) Nicht erweiterbar – nur Werte der IRs sind erlaubt

Die Codeliste darf nicht erweitert werden, d.h. ihre erlaubten Werte umfassen nur die Werte, die in diesem Register enthalten sind.

b) Erweiterbar um spezifischere Werte – Werte der IRs und detailliertere Werte sind erlaubt

Die Codeliste darf nur um spezifischere Werte erweitert werden, d.h. ihre erlaubten Werte umfassen die Werte, die in diesem Register enthalten sind, und zusätzlich spezifischere von Datenanbietern definierte Werte.



Conceptual data models	Encoding	Harmonised vocabularies	Registers
<ul style="list-style-type: none">• spatial objects and their properties and relationships for 34 data themes• cross-domain harmonization• based on a common modelling framework• managed in a common UML repository	<ul style="list-style-type: none">• GML application schemas as standard encoding• conceptual models independent of concrete encodings• also possible to derive other encodings (e.g. based on RDF)	<ul style="list-style-type: none">• to overcome interoperability issues caused by free-text and/or multi-lingual content• allow more specific terms from local vocabularies in addition to the harmonized terms	<ul style="list-style-type: none">• provide unique and persistent identifiers for resources• allow their consistent management and versioning• items can be made unique and referred to unambiguously

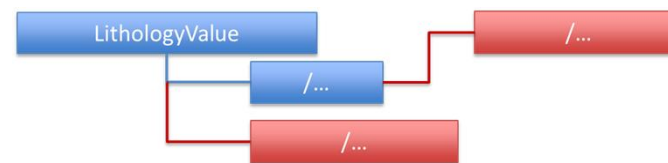
INSPIRE Code lists

4 Erweiterungsklassen von INSPIRE code lists

Conceptual data models	Encoding	Harmonised vocabularies	Registers
<ul style="list-style-type: none">• spatial objects and their properties and relationships for 34 data themes• cross-domain harmonization• based on a common modelling framework• managed in a common UML repository	<ul style="list-style-type: none">• GML application schemas as standard encoding• conceptual models independent of concrete encodings• also possible to derive other encodings (e.g. based on RDF)	<ul style="list-style-type: none">• to overcome interoperability issues caused by free-text and/or multi-lingual content• allow more specific terms from local vocabularies in addition to the harmonized terms	<ul style="list-style-type: none">• provide unique and persistent identifiers for resources• allow their consistent management and versioning• items can be made unique and referred to unambiguously

- c) Erweiterbar um beliebige Werte – Werte der IRs und andere sind erlaubt

Die Codeliste darf um beliebige Werte erweitert werden, d.h. ihre erlaubten Werte umfassen die Werte, die in diesem Register enthalten sind, und zusätzlich beliebige von Datenanbietern definierte Werte.



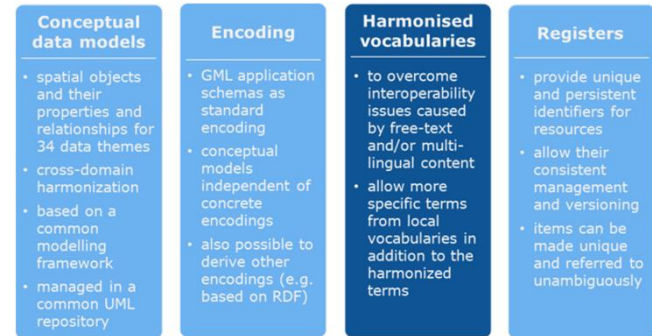
- d) Leere Codeliste – beliebige Werte sind erlaubt

Für die Codeliste sind in diesem Register keine Werte spezifiziert, d.h. ihre erlaubten Werte umfassen beliebige von Datenanbietern definierte Werte.



INSPIRE Code lists

4 Erweiterungsklassen von INSPIRE code lists



a) Nicht erweiterbar – [none]

b) Erweiterbar um spezifischere Werte – [narrower]

Use Case I

c) Erweiterbar um beliebige Werte – [open]

d) Leere Codeliste – [any]

Use Case II

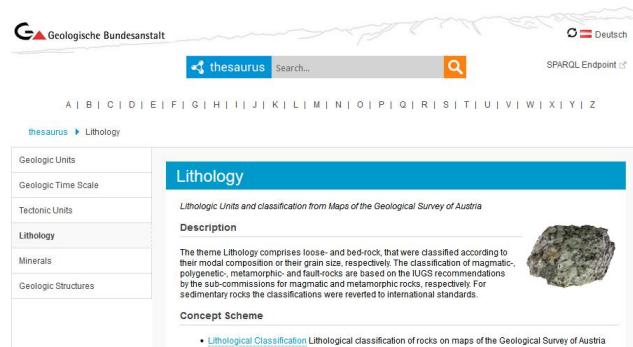
For code lists of types (b), (c) and (d), additional values have to be published in a register

Register of Registries (RoR)
Federation Register

Use Case I - Geology [lithology]

[AT] + [MIWP-6: Registers]

GBA Thesaurus (als Registry) in INSPIRE RoR



```
<?xml version="1.0" encoding="UTF-8"?>
<?xml-stylesheet type="text/xsl" href="http://inspire-regadmin.jrc.ec.europa.eu/register-federation

<rdf:RDF
  xmlns:dcat="http://www.w3.org/ns/dcat#"
  xmlns:dct="http://purl.org/dc/terms/"
  xmlns:foaf="http://xmlns.com/foaf/0.1/"
  xmlns:rdf="http://www.w3.org/1999/02/22-rdf-syntax-ns#"
>
<!-- ## Registry descriptor: Mandatory Conformance Class ## -->

<!-- URI / URL of the registry -->
  <rdf:Description rdf:about="http://resource.geolba.ac.at/lithology/0">
    <rdf:type rdf:resource="http://www.w3.org/ns/dcat#Catalog"/>

<!-- Name of the registry -->
  <dct:title xml:lang="en">Lithological Classification Austria - Test</dct:title>

  <!-- Registry description -->
  <dct:description xml:lang="en">The theme Lithology comprises loose- and bed-rock, tha
  <dct:description xml:lang="de">Das Thema Lithologie umfasst Locker- und Festgesteine,

  <!-- Registry publisher / responsible / contact point -->
  <dct:publisher>

  <!-- Update frequency. For conformance with DCAT-AP, this needs to be specified by using the
  MDR Frequency register maintained by the EU Publications Office:
  http://publications.europa.eu/mdr/authority/frequency/ -->
  <dct:accrualPeriodicity rdf:resource="http://publications.europa.eu/resource/authority/freque

<!-- This is the URI for the organisation taken from the MDR Corporate Bodies register maintained by
the EU Publications Office: http://publications.europa.eu/mdr/authority/corporate-body/
These URIs should be used for EU institutions and bodies.
Organisation not included in the MDR Corporate Bodies register should use their official URI (e.
maintained by a national register), if any or use a well defined URI-pattern (an example could b
DBpedia URI)
-->
  <foaf:Agent rdf:about="http://ccca.ac.at">
    <foaf:name xml:lang="en">Geological Survey of Austria</foaf:name>
    <foaf:mbox rdf:resource="mailto:chris.schubert@ccca.ac.at"/>
    <foaf:homepage rdf:resource="http://ccca.ac.at"/>
  </foaf:Agent>
```

Registry + Register descriptor
Core + Harvesting + Content
conformane class

Use Case I - Geology [lithology]

[AT] + [MIWP-6: Registers]

GBA Thesaurus (als Registry) in INSPIRE RoR

The screenshot displays the INSPIRE Register Federation interface. At the top, there is a navigation bar with the European Commission logo and the text 'INSPIRE Register Federation'. A yellow warning banner states: 'This is a testbed instance of the INSPIRE Register Federation. Please remind that the contents may not be complete and/or accurate.' The main content area is divided into two columns. The left column, titled 'Register descriptor validator', shows validation results for a file, indicating it is conformant to the 'Core Conformance Class', 'Automatic Harvesting Conformance Class', and 'Content Conformance Class'. The right column, titled 'Registries', contains a table with the following data:

Filter Label	Filter Publisher	Filter URI
Label	Publisher	URI
Spanish Registry - Test version	Instituto Geográfico Nacional	http://www.idee.es/register-inspire
EEA Data Dictionary vocabularies	European Environment Agency	http://dd.eionet.europa.eu/vocabularies
INSPIRE registry	European Commission, Joint Research Centre	http://inspire.ec.europa.eu/registry
Lithological Classification Austria - Test	Geological Survey of Austria	http://resource.geolba.ac.at/lithology/0

Below the table, there is a pagination control showing 'Showing 1 to 4 of 4 entries' and a 'Web Service details' button. At the bottom of the interface, there is a REST URL: `http://inspire-regadmin.jrc.ec.europa.eu/ror/rest/registries`.

Use Case II - INSPIRE LandCoverClassValue

[AT] + [MIWP-6: Registers]

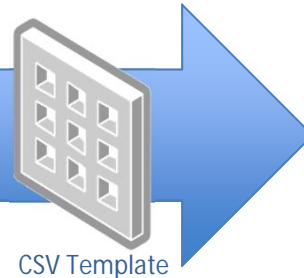
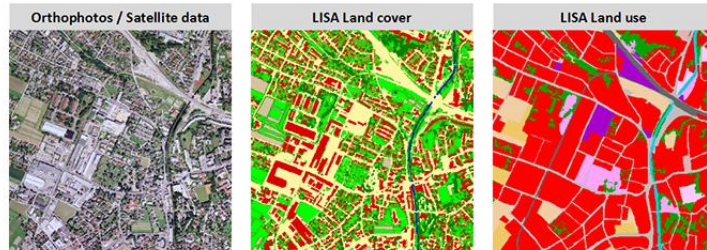
LISA-Land Information System



» LISA / Overview

Development of the Austrian Land Information System

The overall aim of the Land Information System Austria is to provide current and detailed geospatial information on the status and development of land cover and land use in Austria to public authorities and the private sector.



CSV Template

	A	B	C	D
1	Application Schema Land Cover Nomenclature	Code list LISAValue	Code 1_Abiotic	Parent value
2	Land Cover Nomenclature	LISAValue	2_Biotic	
3	Land Cover Nomenclature	LISAValue	1_1_BuiltUp	1_Abiotic
4	Land Cover Nomenclature	LISAValue	1_2_NonBuiltUp	1_Abiotic
5	Land Cover Nomenclature	LISAValue	1_3_Water	1_Abiotic
6	Land Cover Nomenclature	LISAValue	2_Woody	2_Biotic
7	Land Cover Nomenclature	LISAValue	2_Biotic	2_Biotic
8	Land Cover Nomenclature	LISAValue	1_1_BuiltUp	1_1_BuiltUp

```

1 <?xml version="1.0" encoding="UTF-8"?>
2 <?xml-stylesheet type="text/xsl" href="http://inspire-regdata.ec.europa.eu/inspire-registry/validator/validator_validator.xsl"?>
3 <?xml:namespace prefix="rdf" uri="http://www.w3.org/1999/02/22-rdf-syntax-ns#" />
4 <rdf:RDF
5   xmlns:adms="http://www.w3.org/ns/adms#"
6   xmlns:dc="http://www.w3.org/ns/dc/terms#"
7   xmlns:dcterms="http://purl.org/dc/terms/"
8   xmlns:foaf="http://xmlns.com/foaf/0.1/"
9   xmlns:rdf="http://www.w3.org/1999/02/22-rdf-syntax-ns#"
10  xmlns:skos="http://www.w3.org/2004/02/rks/core#"
11  xmlns:vocaf="http://purl.org/vocommons/vocaf#"
12  xmlns:xsi="http://www.w3.org/2001/XMLSchema-instance"
13  xsi:schemaLocation="http://www.w3.org/2001/XMLSchema-instance http://www.w3.org/2001/XMLSchema-instance"
14  <!-- URI / URL of the register -->
15  <skos:ConceptScheme rdf:resource="http://www.w3.org/2004/02/rks/core#ConceptScheme" />
16  <skos:ConceptScheme rdf:resource="http://www.w3.org/2004/02/rks/core#ConceptScheme" />
17  <!-- Reference to the registry operating the register -->
18  <dcterms:isPartOf
19    <skos:ConceptScheme rdf:resource="http://www.w3.org/2004/02/rks/core#ConceptScheme" />
20    <skos:ConceptScheme rdf:resource="http://www.w3.org/2004/02/rks/core#ConceptScheme" />
21  />
22  <!-- Reference to the external register on which this register relies on -->
23  <skos:ConceptScheme rdf:resource="http://www.w3.org/2004/02/rks/core#ConceptScheme" />
24  <skos:ConceptScheme rdf:resource="http://www.w3.org/2004/02/rks/core#ConceptScheme" />
25  <!-- Registry description -->
26  <dcterms:description xml:lang="en">Austrian Registry - Test version</dcterms:description>
27  </dcterms:description>
28  <!-- Name of the register -->
29  <skos:prefLabel xml:lang="en">LISA-Land Information System</skos:prefLabel>
30  <dcterms:description xml:lang="en">LISA Land cover classes, created within the LISA-Land Information System project.</dcterms:description>
31  <dcterms:source rdf:resource="http://www.landinformationssystem.at/en-us/lisa/overview.aspx" />
32  </skos:ConceptScheme>
33  </rdf:RDF>

```

SKOS::rdf

Use Case II - INSPIRE LandCoverClassValue

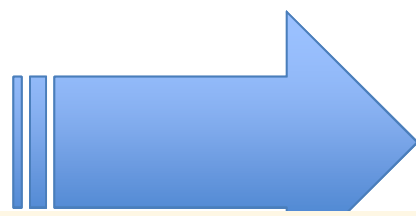
[AT] + [MIWP-6: Registers]

```

1 <?xml version="1.0" encoding="UTF-8"?>
2 <html-stylesheet type="text/xml" href="http://inspire-regadmin.jrc.ec.europa.eu/register-federation/validators/Register_descriptor_validator.xml"?>
3 <rdf:RDF
4   xmlns:rdf="http://www.w3.org/ns/rdf#"
5   xmlns:dcat="http://www.w3.org/ns/dcat#"
6   xmlns:dcterms="http://purl.org/dc/terms/"
7   xmlns:foaf="http://xmlns.com/foaf/0.1/"
8   xmlns:skos="http://www.w3.org/1999/02/22-rdf-syntax-ns#"
9   xmlns:skos="http://www.w3.org/2004/02/skos/core#"
10  xmlns:vocaf="http://purl.org/vocommons/vocaf#"
11
12  xmlns:inspire="http://registry.inspire.gv.at/codelist/">
13
14 <!-- URI / URL of the register -->
15 <rdf:Description rdf:about="http://registry.inspire.gv.at/codelist/LISALandCoverClassValue"
16   <rdf:type rdf:resource="http://www.w3.org/ns/dcat#ConceptScheme" />
17
18 <!-- Reference to the registry operating the register -->
19 <dcterms:isPartOf>
20   <dcat:Catalog rdf:about="http://registry.inspire.gv.at/" />
21 </dcterms:isPartOf>
22
23 <!-- Reference to the external register to which this Register refers -->
24 <skos:relatedTo rdf:resource="http://www.w3.org/ns/dcat#Catalog" />

```

registry/register descriptor



[About](#) | [Contact](#) | [Legal notice](#)

English (en)

INSPIRE
Register Federation

European Commission > INSPIRE > Register Federation > Registers

Registries
Registers
Relations
Federated search
Help
Login

Register

Details	
Local ID:	99764810fa2ea48df25730c663701e09
Label:	LISA Land Cover Class
URI:	http://registry.inspire.gv.at/codelist/LISALandCoverClassValue
Publisher:	CCCA Data Centre http://ccca.ac.at chris.schubert@ccca.ac.at http://ccca.ac.at
Registry:	Austrian INSPIRE registry http://registry.inspire.gv.at
Update frequency:	Not available

REST URL: <http://inspire-regadmin.jrc.ec.europa.eu/ror/rest/registers/99764810fa2ea48df25730c663701e09>

INSPIRE

European Commission

Register Federation

European Commission > INSPIRE > INSPIRE register federation > Registry descriptor validator

Register descriptor validator

The results of the validation to the Register descriptor are available below.

Validation results

exchange file is conformant to the following conformance classes:

- Core Conformance Class
- Automatic Harvesting Conformance Class
- Content Conformance Class

detailed report related to each of the conformance classes are available below.

Core conformance class

Register URI: <http://resource.geolba.ac.at/lithology/0>
 Registry: <http://resource.geolba.ac.at/>

Planungen 2017

- Installation der Re3gistry-Software 1.3 (Release 18.11.16)
 - New Features: i) support for the INSPIRE register federation formats (including items that are defined in external registers), ii) Unabhängige URI – z.B. Verwendung von <http://resource.geolba.ac.at/> anstatt <http://registry.inspire.gv.at/registry>
- Registry.AT - Erweiterung durch Codelisten
- Start zum Namensraumregister
 - Länderkennung.Geodatenstelle.INSPIRE_Thema
 - e.g. AT.0038.25.02

